

results TYP-B - sample 1

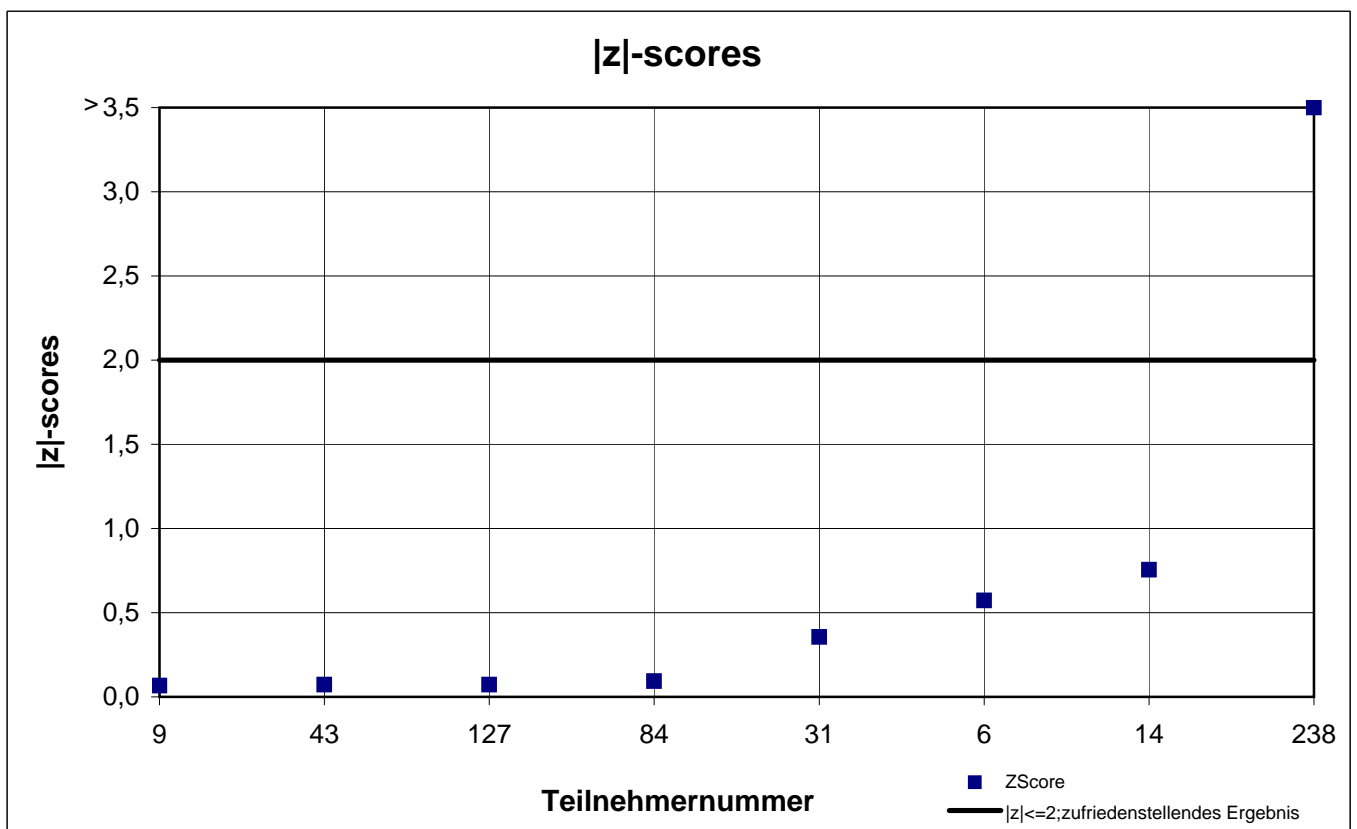
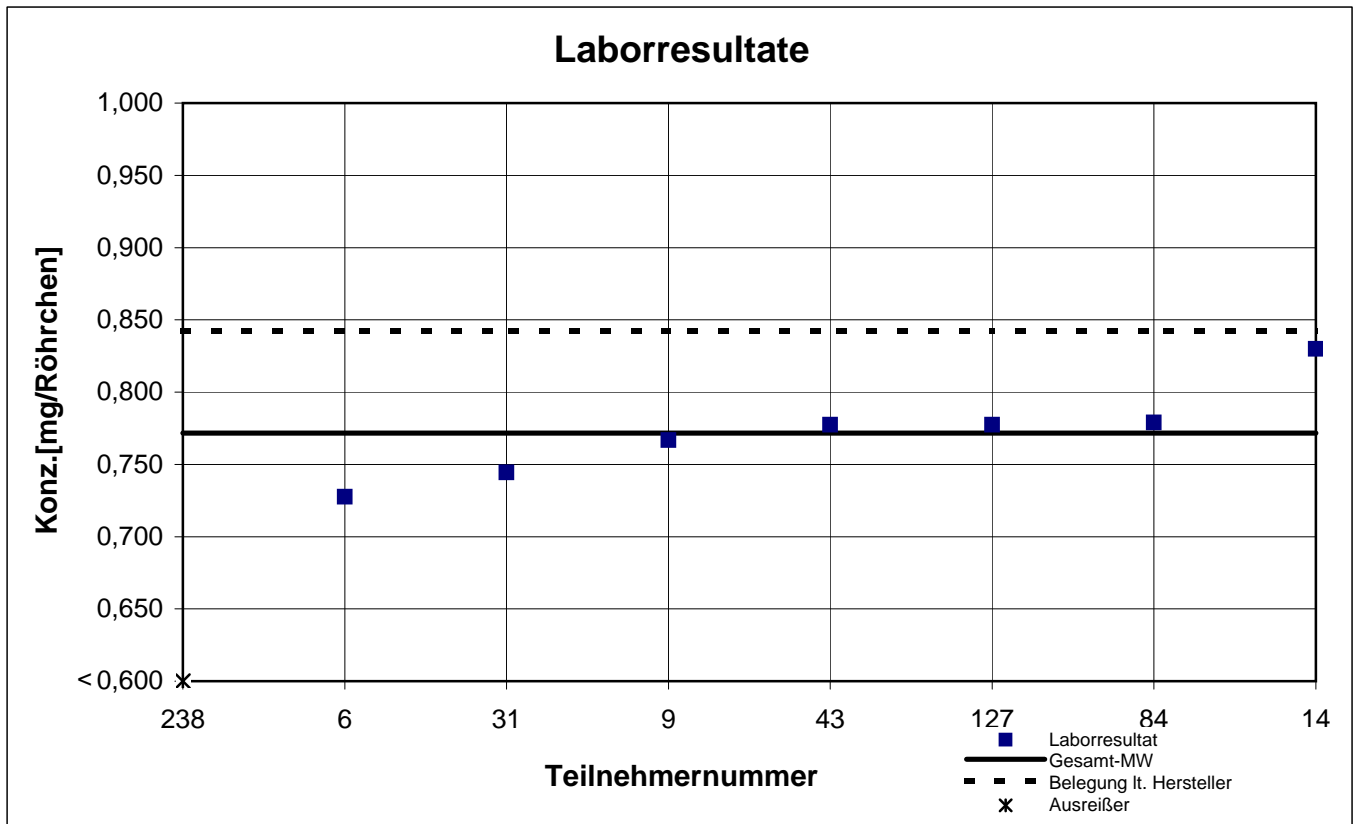
participant number	i-butylacetate		n-heptane		n-octane	
	result [mg/tube]	z - score	result [mg/tube]	z - score	result [mg/tube]	z - score
6	0,728	0,6	1,177	0,3	0,223	0,9
9	0,767	0,1	1,232	0,2	0,272	1,1
14	0,830	0,8	1,632	3,5	0,223	0,9
31	0,744	0,4	1,105	0,9	0,238	0,3
43	0,777	0,1	1,271	0,5	0,231	0,6
84	0,779	0,1	1,289	0,6	0,243	0,1
127	0,777	0,1	1,195	0,1	0,259	0,6
238	0,463	4,0	1,143	0,6	0,134	4,5
245	k.A.	k.A.	1,271	0,5	0,268	1,0
248	1,073	1,2	2,289	0,3	0,991	0,8

marked fields are outliers!

	i-butyl acetate	n-heptane	n-octane
mean c_k [mg / tube]	0,772	1,210	0,245
standard deviation S_k [mg / tube]	0,0322	0,0665	0,0194
relative standard deviation [%]	4,18	5,49	7,97
mean value of control samples [mg / tube]	0,842	1,280	0,265

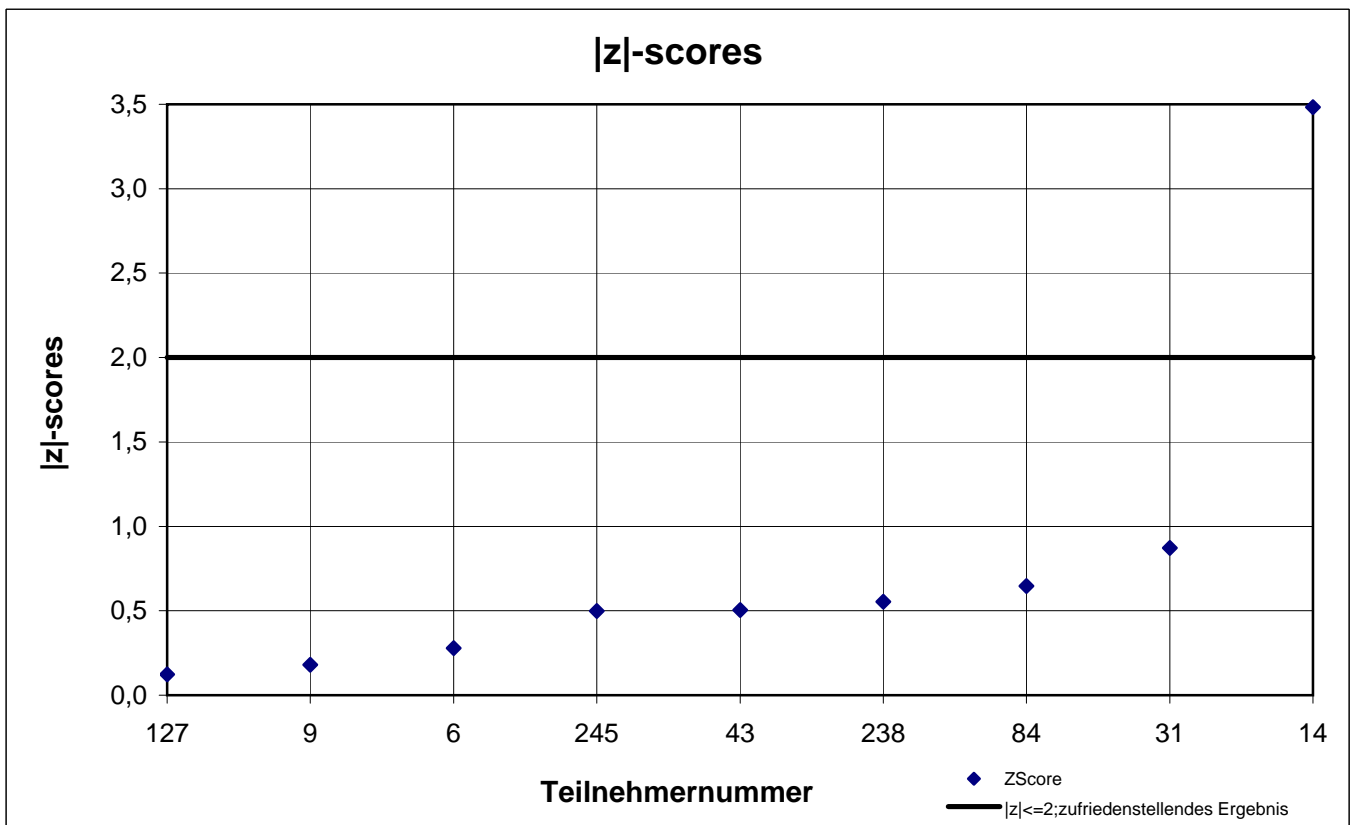
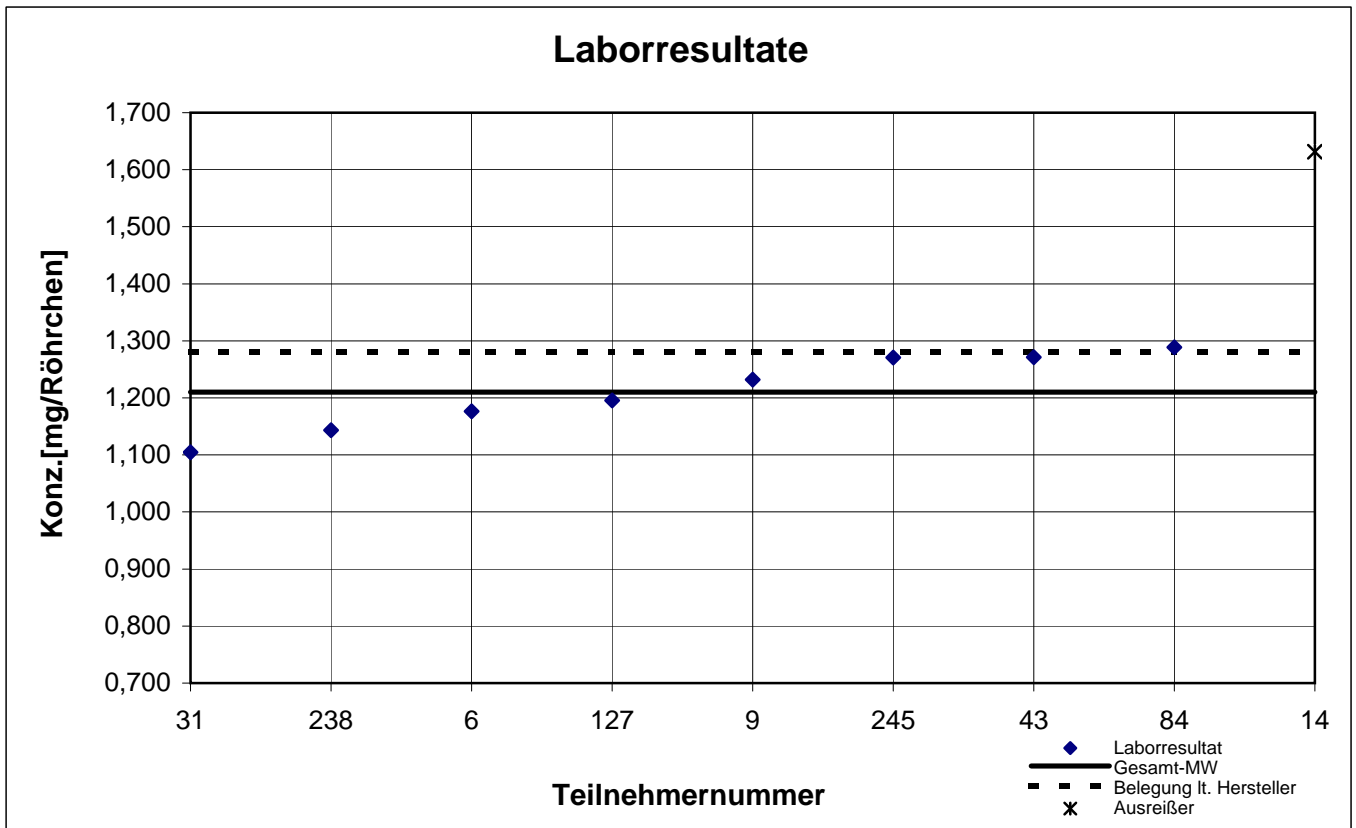
Typ-B -Probe 1

i-Butylacetat



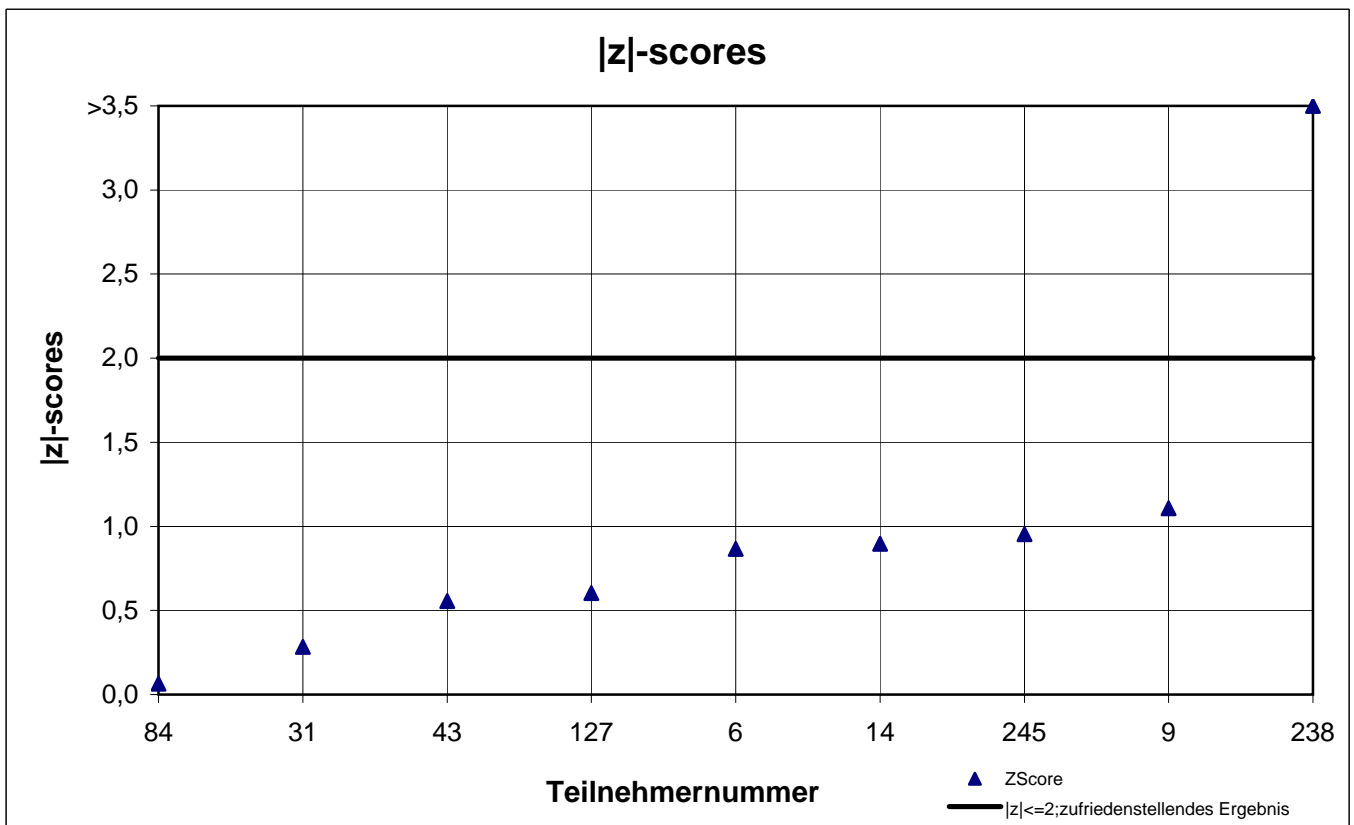
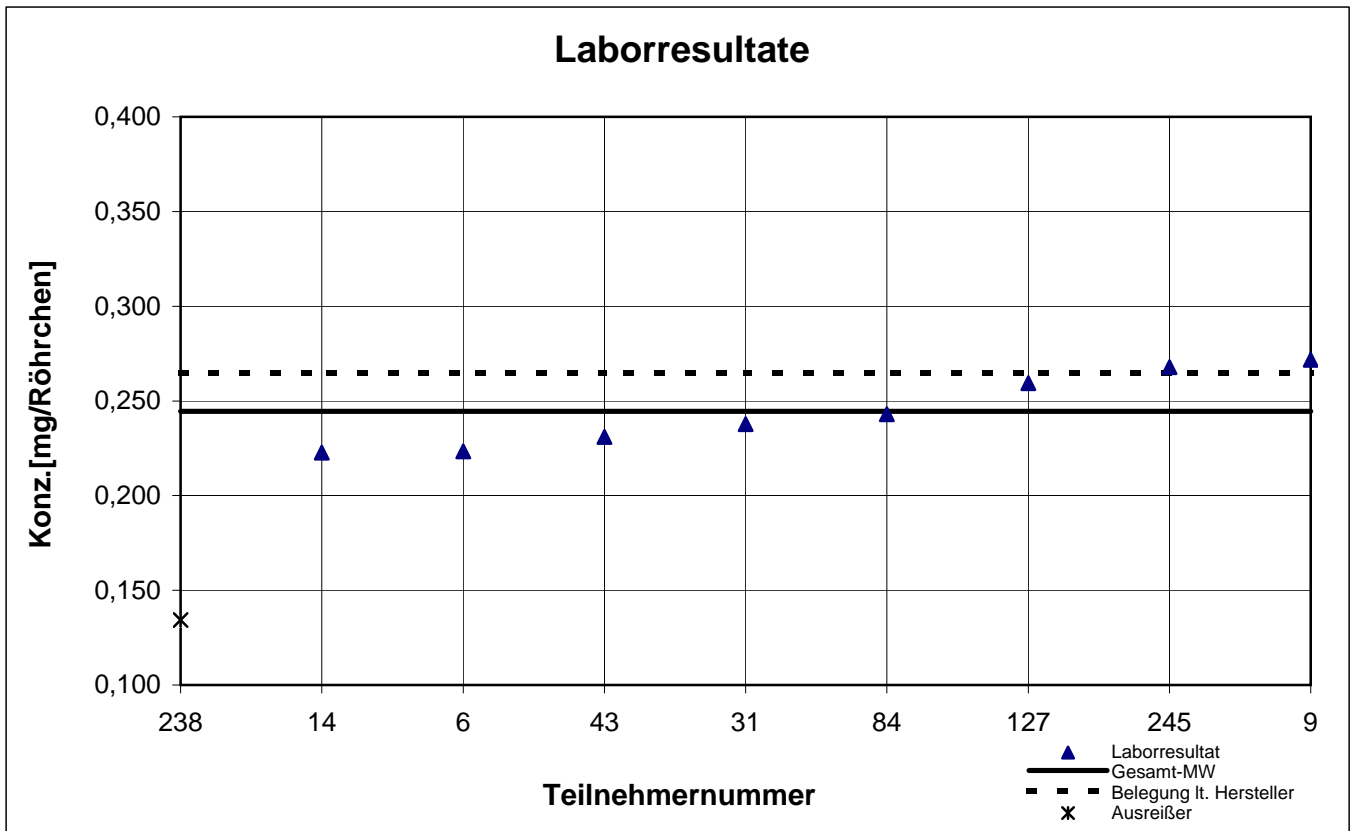
Typ-B -Probe 1

n-Heptan



Typ-B -Probe 1

n-Propylacetat



results TYP-B - sample 2

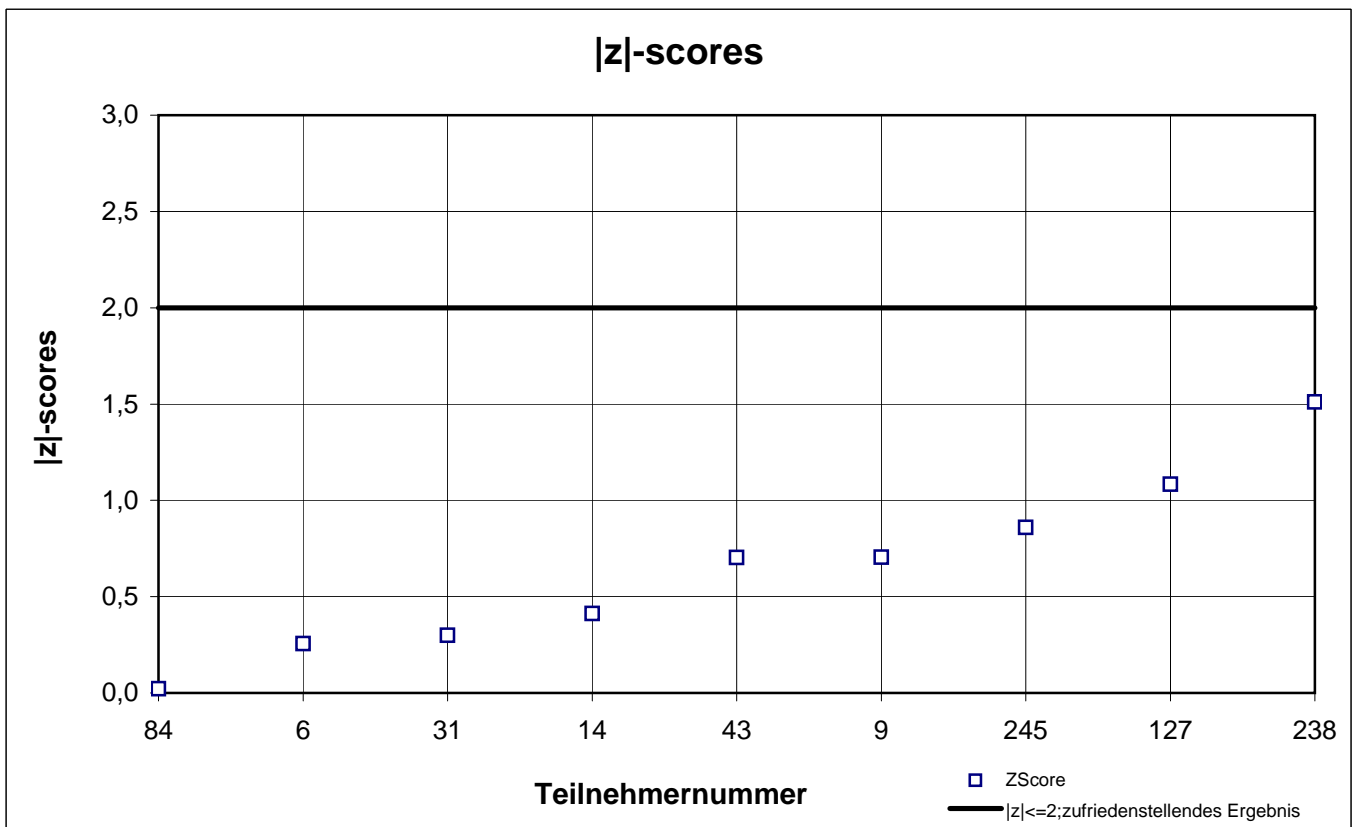
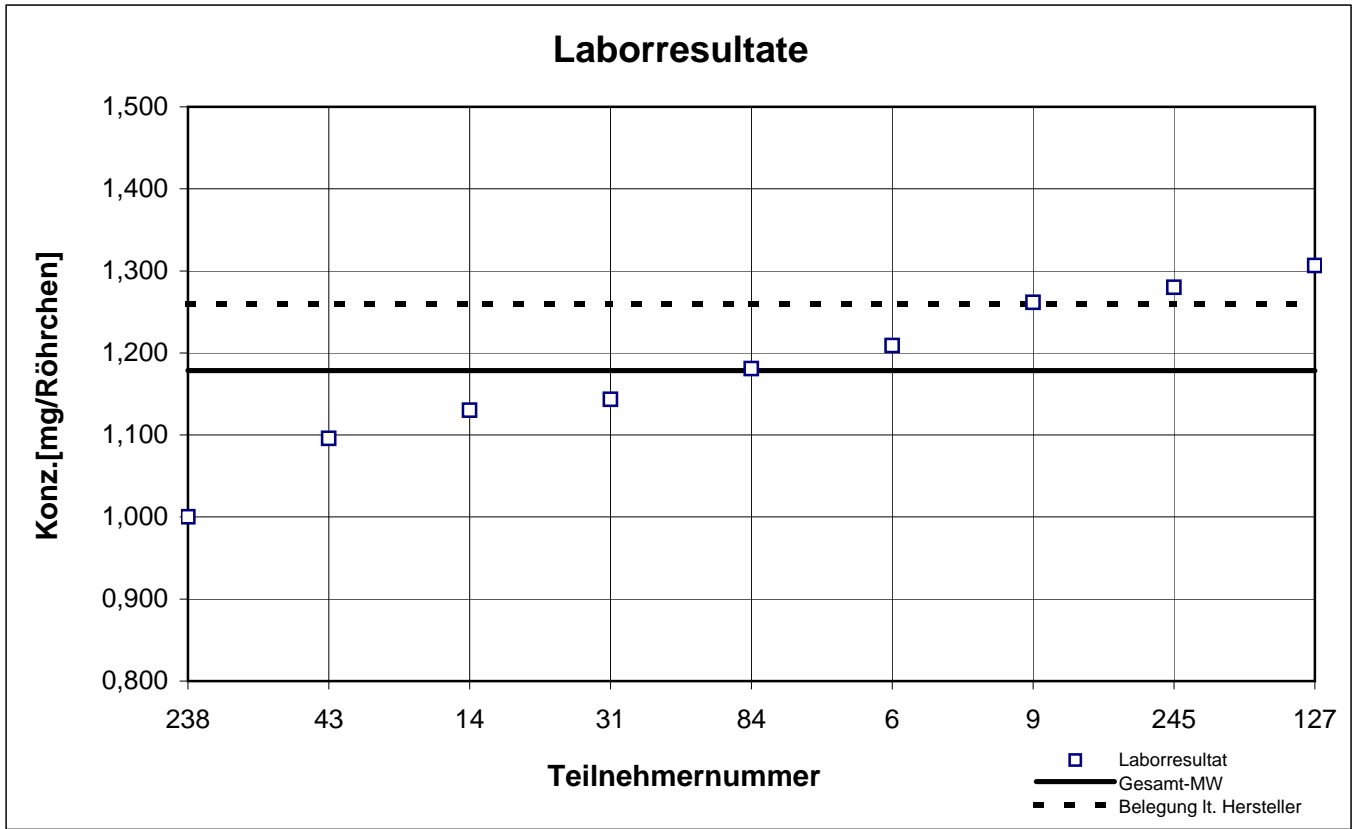
participant number	ethyl acetate		n-heptane		o-xylene		toluene	
	result [mg/tube]	z - score	result [mg/tube]	z - score	result [mg/tube]	z - score	result [mg/tube]	z - score
6	1,209	0,3	1,162	0,4	0,238	0,2	3,922	0,3
9	1,262	0,7	1,213	0,0	0,242	0,1	4,131	0,2
14	1,130	0,4	1,260	0,4	0,277	1,4	3,983	0,1
31	1,143	0,3	1,204	0,0	0,244	0,0	4,167	0,3
43	1,096	0,7	1,220	0,1	0,233	0,4	4,068	0,1
84	1,181	0,0	1,323	0,9	0,236	0,3	3,913	0,3
127	1,306	1,1	1,182	0,2	0,244	0,0	4,004	0,1
238	1,000	1,5	1,096	0,9	0,233	0,4	3,959	0,2
245	1,280	0,9	1,214	0,0	0,243	0,0	4,172	0,3
248	2,273	0,6	0,702	0,3	1,495	0,4	0,824	0,6

 marked fields are outliers!

	ethyl acetate	n-heptane	o-xylene	toluene
mean c_k [mg / tube]	1,179	1,208	0,243	4,036
standard deviation S_k [mg / tube]	0,0978	0,0625	0,0130	0,1022
relative standard deviation [%]	8,30	5,18	5,48	2,53
mean value of control samples [mg / tube]	1,260	1,236	0,256	4,305

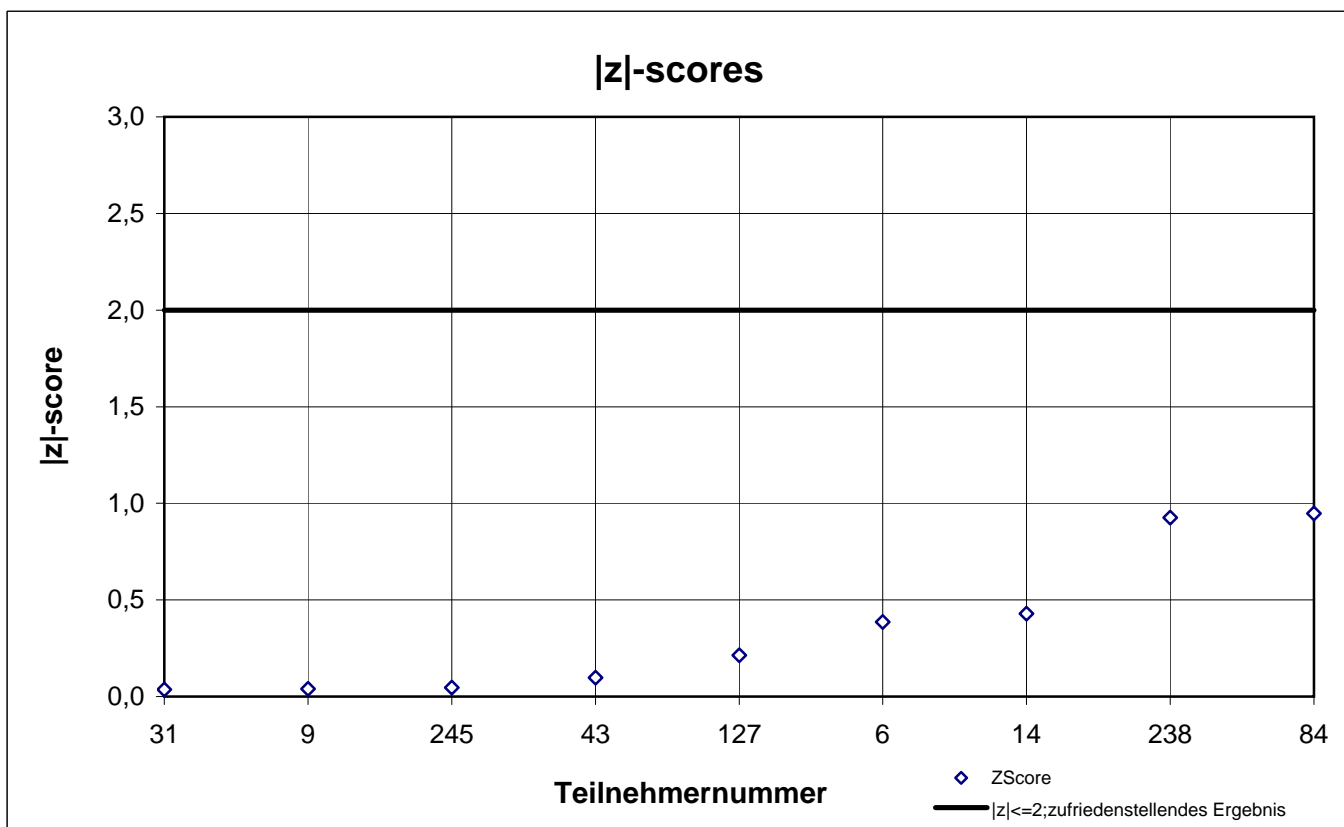
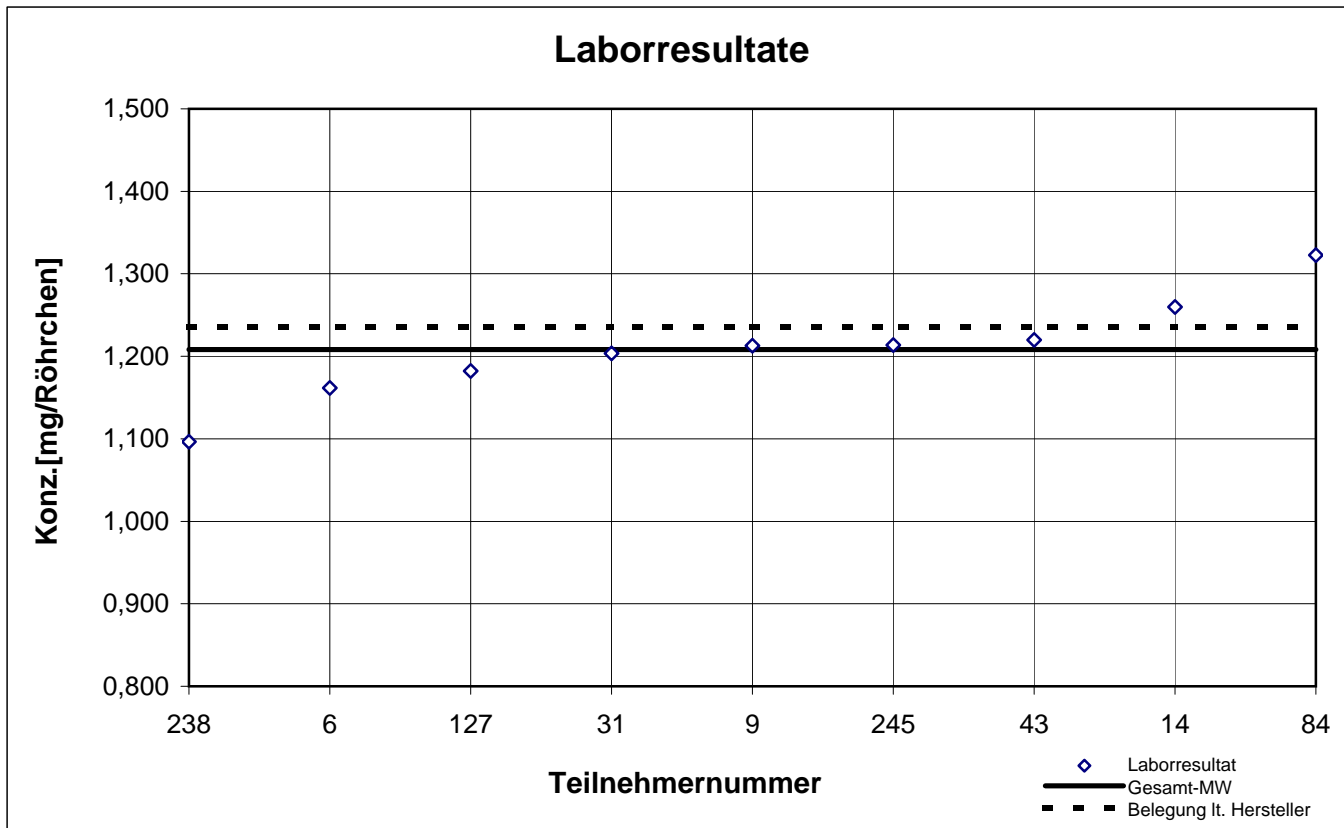
Typ-B -Probe 2

Ethylacetat



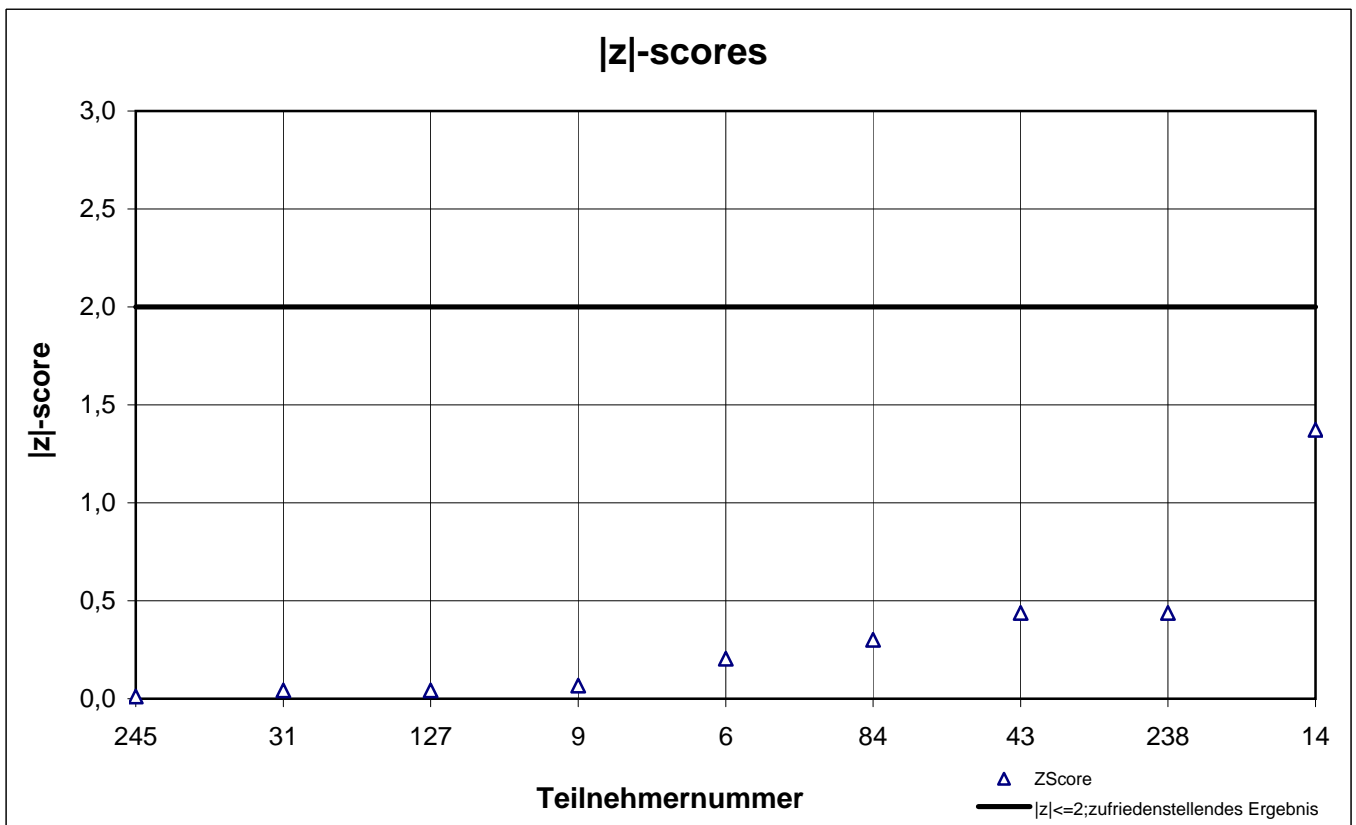
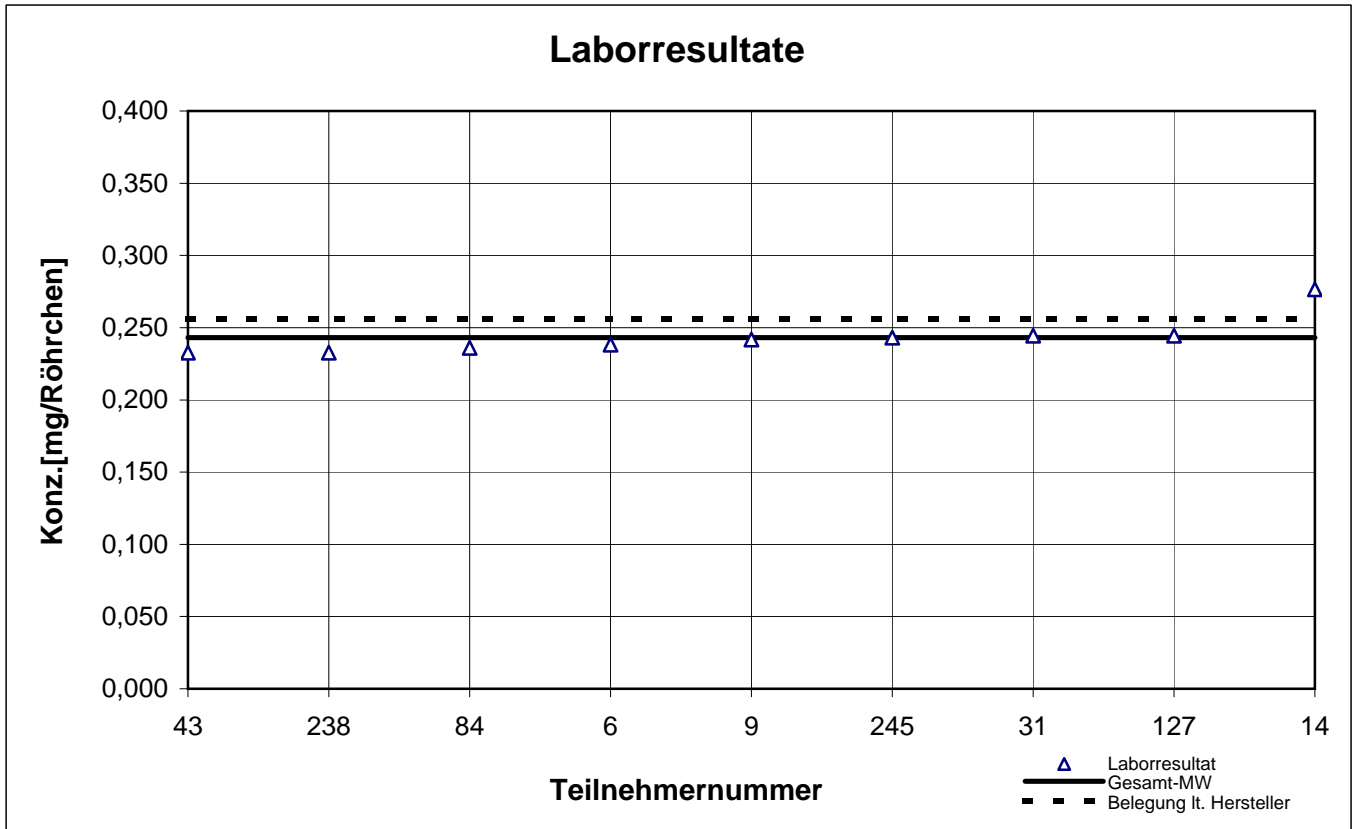
Typ-B -Probe 2

n-Heptan



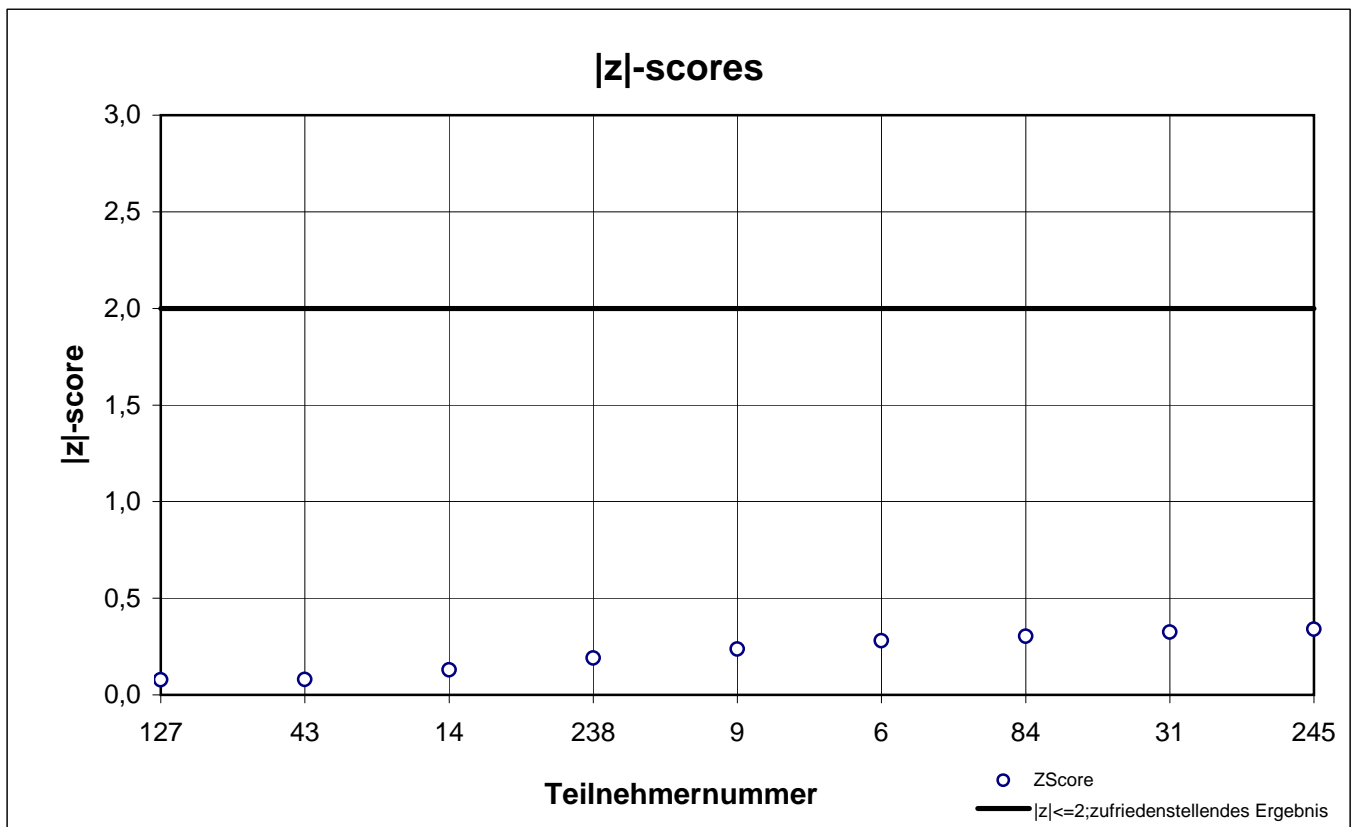
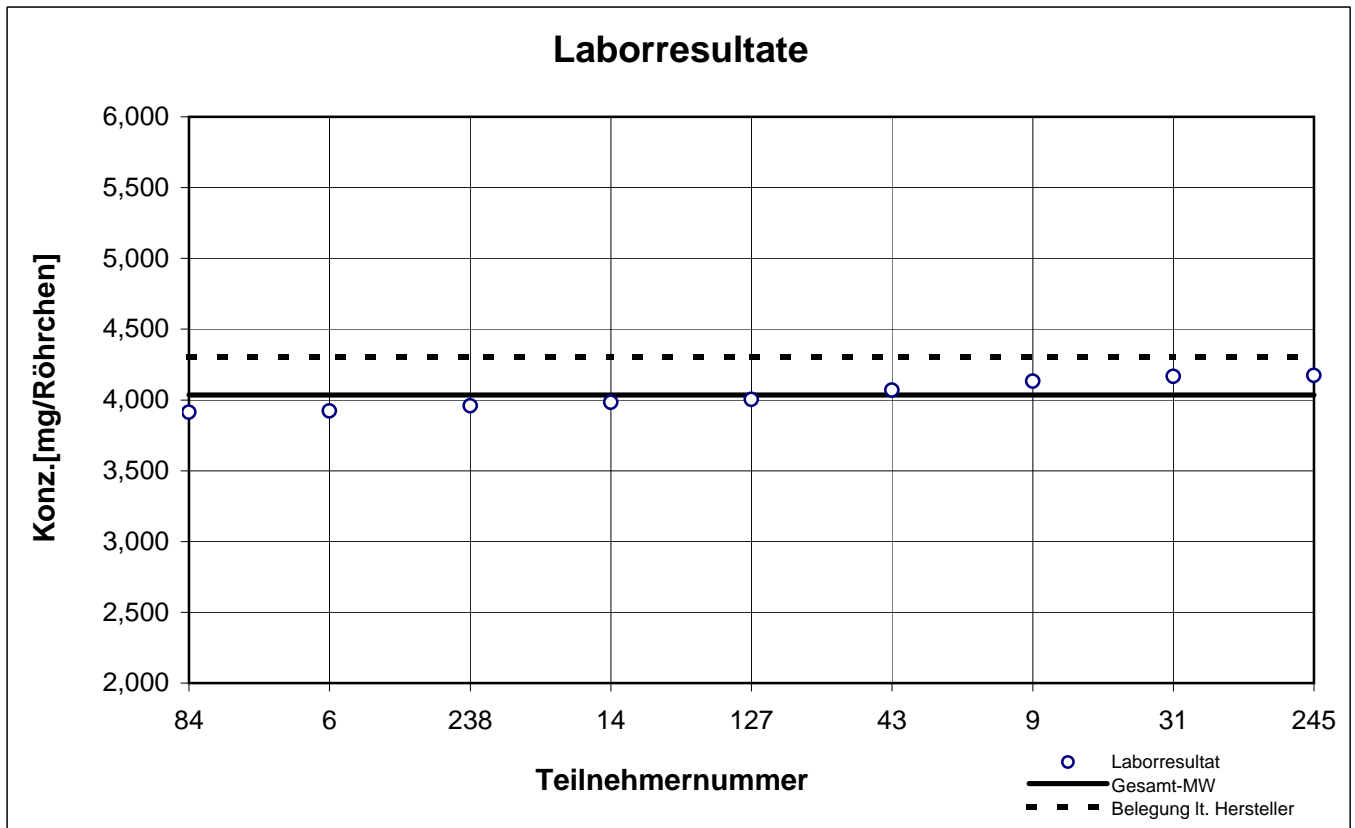
Typ-B -Probe 2

o-Xylol



Typ-B -Probe 2

Toluol



results TYP-B - sample 3

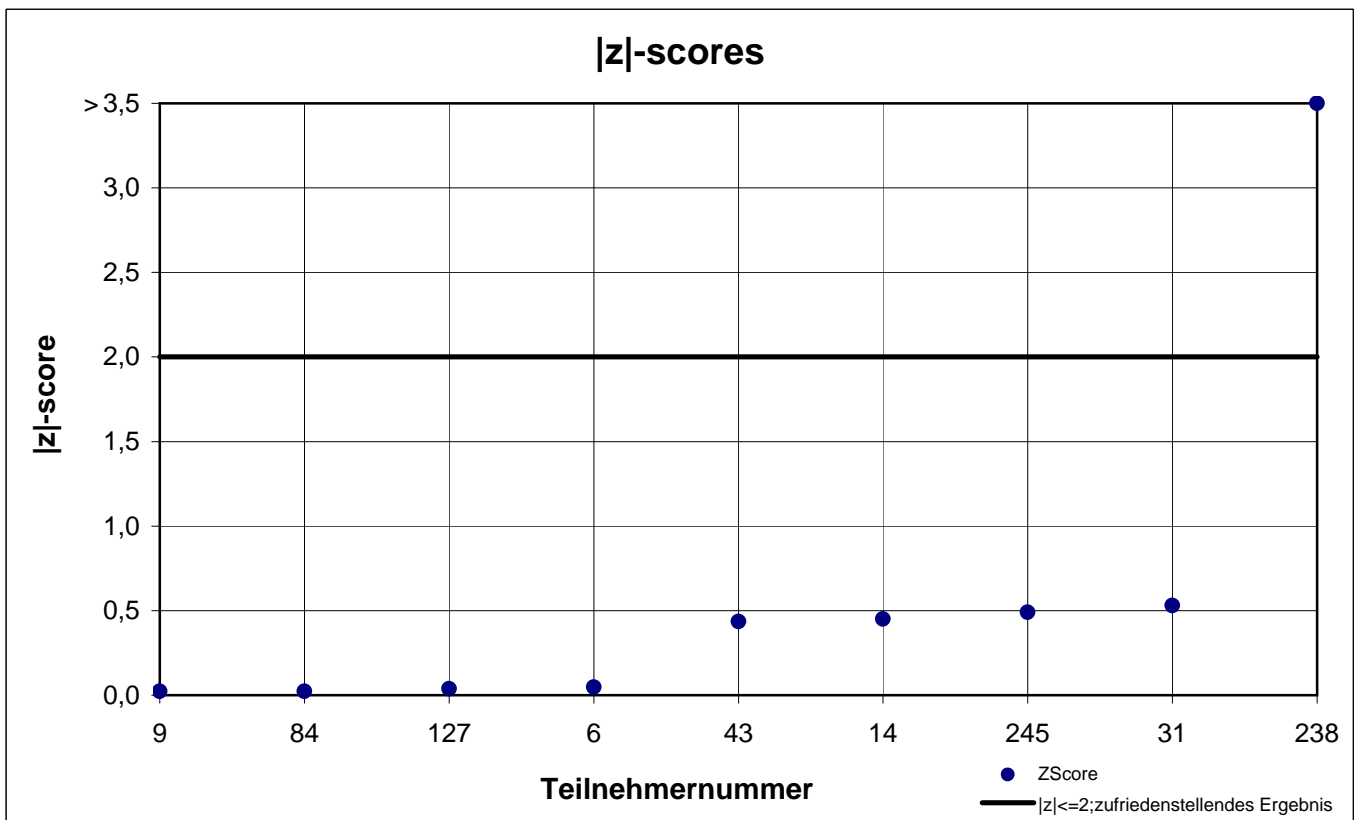
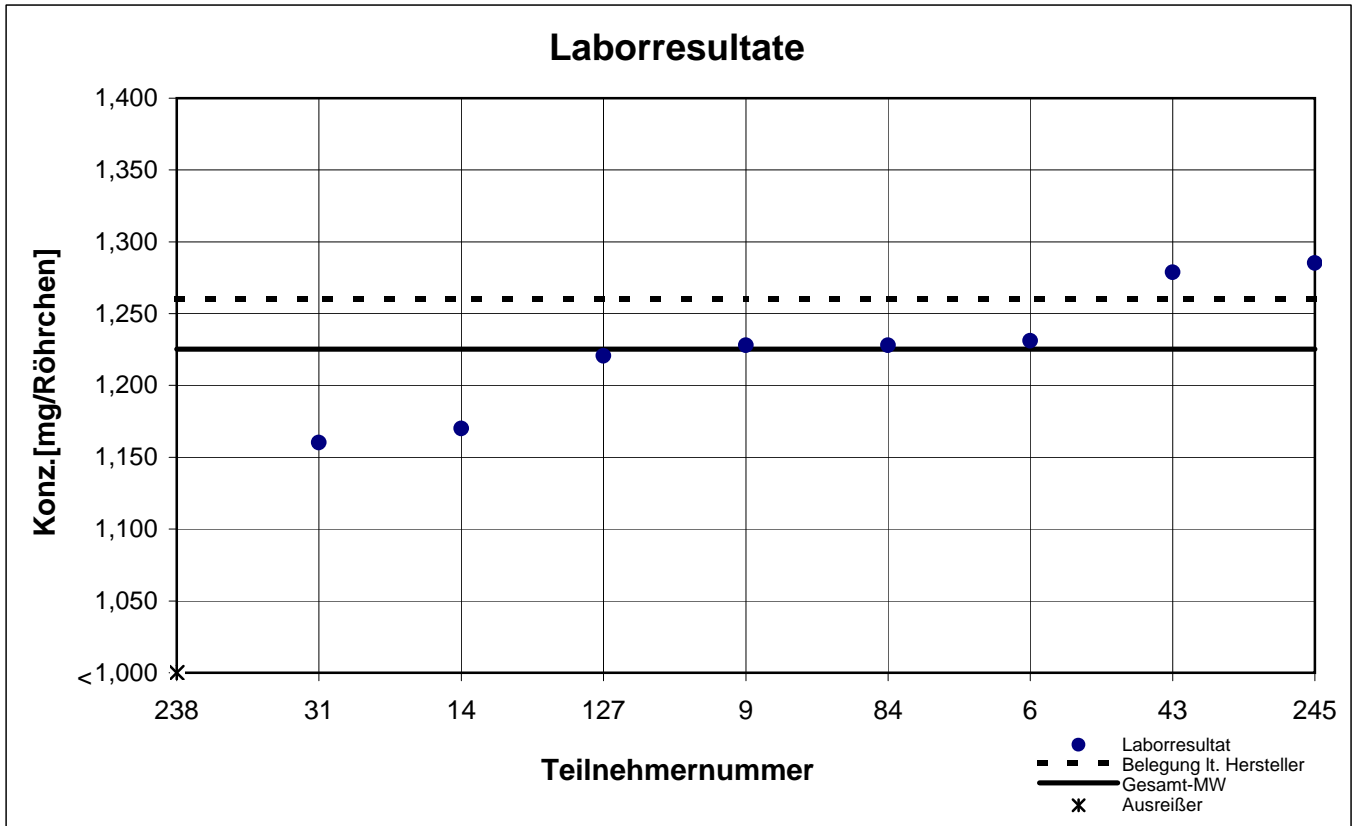
participant number	cyclohexane		ethylbenzene		n-octane	
	result [mg/tube]	z - score	result [mg/tube]	z - score	result [mg/tube]	z - score
6	1,231	0,0	0,396	0,6	1,050	0,5
9	1,228	0,0	0,361	0,4	1,111	0,1
14	1,170	0,5	0,237	3,7	5,693	41,7
31	1,160	0,5	0,365	0,3	1,046	0,5
43	1,279	0,4	0,367	0,2	1,150	0,4
84	1,228	0,0	0,399	0,6	1,117	0,1
127	1,221	0,0	0,394	0,5	1,121	0,2
238	0,691	4,4	0,339	1,0	1,063	0,3
245	1,285	0,5	0,376	0,0	1,146	0,4
248	1,263	1,8	2,136	1,1	0,335	0,5

marked fields are outliers!

	cyclohexane	ethyl benzene	n-octane
mean c_k [mg / tube]	1,225	0,375	1,101
standard deviation S_k [mg / tube]	0,0443	0,0207	0,0417
relative standard deviation [%]	3,62	5,55	3,79
mean value of control samples [mg / tube]	1,260	0,374	1,155

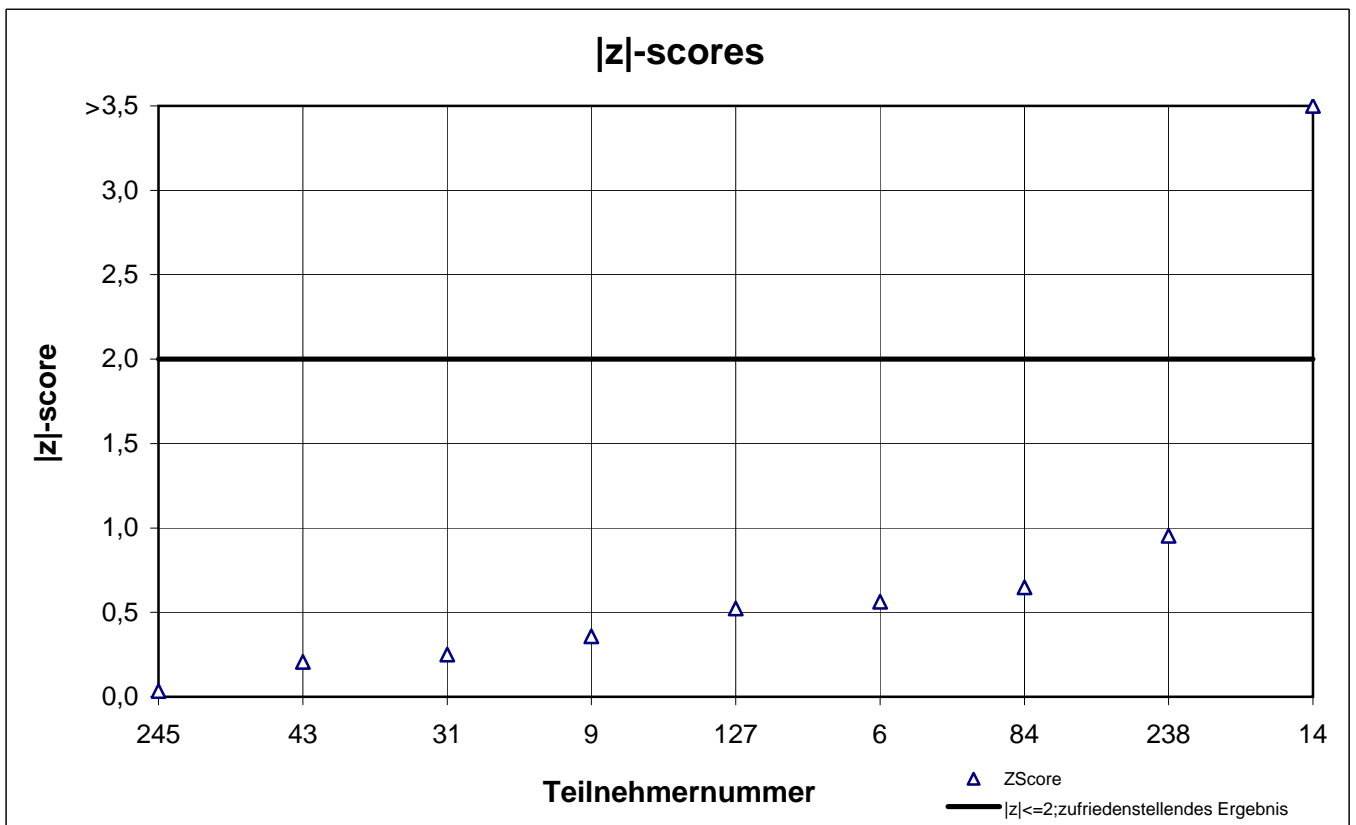
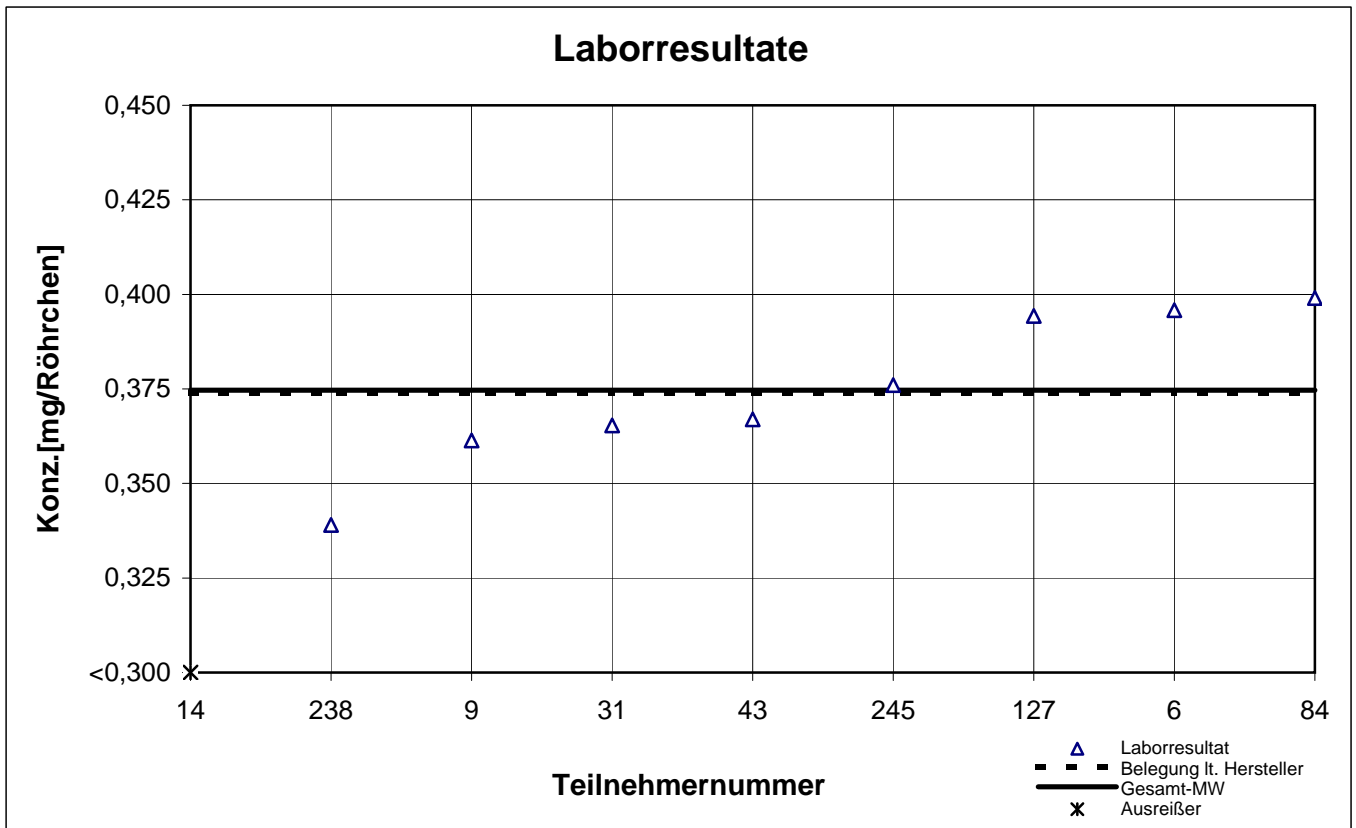
Typ-B -Probe 3

Cyclohexan



Typ-B -Probe 3

Ethylbenzol



Typ-B -Probe 3

n-Oktan

